

PERIOD			THREE BEDROOM APARTMENT "MANSARDA" 2 Levels Two bathrooms	TWO BEDROOM APARTMENT "A" Two bathrooms	TWO BEDROOM APARTMENT "B"	ONE BEDROOM APARTMENT "1"	ONE BEDROOM APARTMENT "MANSARDA"
			Sleeps 6	Sleeps 6	Sleeps 5	Sleeps 4	Sleeps 4
LOW season	23 May	3 July	€ 130,00	€ 130,00	€ 120,00	€ 110,00	€ 110,00
MID-season	4 July	31 July	€ 140,00	€ 140,00	€ 130,00	€ 120,00	€ 120,00
HIGH season	1 Aug.	7 Aug.	€ 150,00	€ 150,00	€ 140,00	€ 130,00	€ 130,00
TOP season	8 Aug.	21 Aug.	€ 160,00*	€ 160,00*	€ 150,00*	€ 140,00*	€ 140,00*
HIGH season	22 Aug.	29 Aug.	€ 150,00*	€ 150,00*	€ 140,00*	€ 130,00*	€ 130,00*
MID-season	30 Aug.	11 Sept.	€ 140,00	€ 140,00	€ 130,00	€ 120,00	€ 120,00
LOW season	12 Sept.	30 Nov.	€ 130,00	€ 130,00	€ 120,00	€ 110,00	€ 110,00

Daily rates valid for a minimum of 3 days stay.
*From 8 to 29 August 2020 minimum 7 days stay.

RATES INCLUDE:

electricity, water, heating, final cleaning, towels, parking for 1 car per apartment.

Ski and boot storage, laundry machine and tumble drier, bike storage with workshop equipped for small maintenance located in a communal room on the ground floor of the Chalet.

DAILY TOURIST TAX:

Daily tourist tax of € 1.30, applicable for a maximum of 7 days (excluding all children up to 12 years).

CHECK-IN: from 3.30 PM to 6.30 PM.

Arrivals after 6.30 PM: please let us know in advance by calling the number +39 338 374 94 38.

CHECK-OUT: before 9.30 AM.

SHORT STAYS:

Contact us for a free quote based on availability.

PETS: we welcome small pets upon previous communication at the time of booking.

BOOKING:

On the website www.pirovano.it it is possible to make a quote for the stay, check the availability of the apartments and consult the general conditions of the contract. Once booked, it is necessary to provide a deposit equal to 30% of the rent. (Penitential deposit pursuant to art.1385 CC that in case of withdrawal or impossibility occurred before the start of the rental period may be retained by Pirovano Stelvio SpA).

APARTMENTS "CHALET FELSE"

THREE BEDROOM

APARTMENT "MANSARDA" - 2 Levels

120 m² - suitable for 6 persons, the apartment can accommodate up to 6 occupants

TWO BEDROOM APARTMENT "A"

70 m² - suitable for 4 persons, the apartment can accommodate up to 6 occupants

TWO BEDROOM APARTMENT "B"

60 m² - suitable for 4 persons, the apartment can accommodate up to 5 occupants

ONE BEDROOM APARTMENT "1"

44 m² - suitable for 2 persons, the apartment can accommodate up to 4 occupants

ONE BEDROOM APARTMENT "MANSARDA"

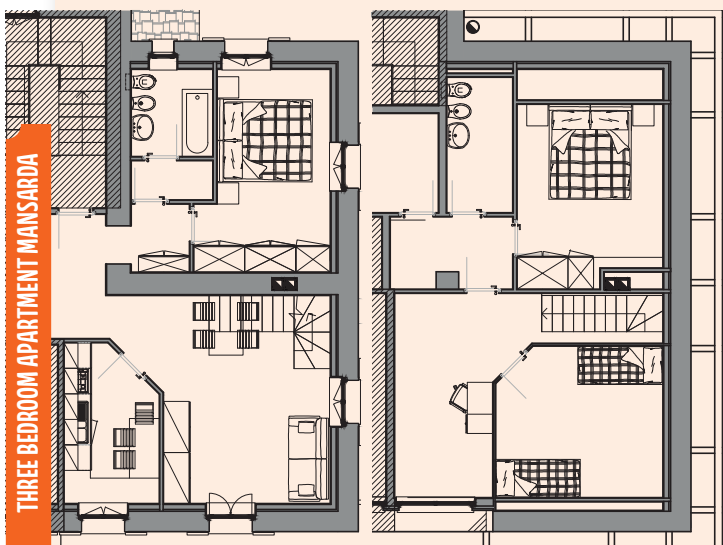
56 m² - suitable for 2 persons, the apartment can accommodate up to 4 occupants.

INFORMATIONS

www.pirovano.it
info@pirovano.it

PIROVANO STELVIO SPA

BOOKING OFFICE - tel. +39 0342 210040
HOLIDAY APARTMENTS - tel. +39 338 374 94 38



THREE BEDROOM APARTMENT MANSARDA

Short-term rental apartments in the wonderful town of Bormio, a renowned spot for summer and winter tourism, well-known for skiing as well as for its thermal waters.

Pirovano offers its guests various types of accommodation, all strategically located in Bormio town, at a short distance from the pedestrian area, the thermal baths, and the main tourist attractions of the town.

APARTMENTS Chalet Felse

BORMIO • Via Milano 24/A

CIR: 014009-REC-00018

THREE BEDROOM APARTMENT "MANSARDA" / 2 Levels - Sleeps six - 120m²

Located on the second floor of the chalet, the sleeping area consists of 3 bedrooms, 2 of which are on the upper level of the apartment and 1 double bedroom on the first level. Two bathrooms. On the first level, living room with comfortable sofa, dining area, balcony and separate kitchen..

TWO BEDROOM APARTMENT "A" - Sleeps six - 70m²

The apartment is situated on the first floor. It has two double bedrooms, both with a large wardrobe and a desk; two bathrooms; living room with a double sofa bed (sleeps two on a French-sized bed or UK double) and dining area; balcony.

TWO BEDROOM APARTMENT "B" - Sleeps five - 60m²

The apartment is situated on the second floor. It has two double bedrooms, both with a large wardrobe and a desk; two bathrooms; living room with a sofa bed (sleeps one person) and dining area; balcony.

ONE BEDROOM APARTMENT "1" - Sleeps four - 44m²

The apartment is situated on the first floor and has one double bedroom with a large wardrobe and a desk, a living room with a double sofa bed (sleeps two on a French-sized bed or UK double), a dining area and a balcony.

ONE BEDROOM APARTMENT "MANSARDA" - Sleeps four - 56m²

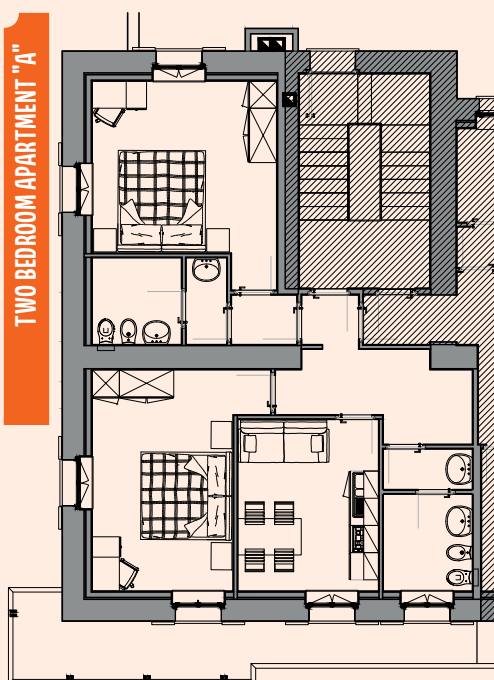
The apartment has one double bedroom with large wardrobes and a desk; living room with a sofa bed (sleeps two on a French-sized bed or UK double) and dining area.

The two bedroom apartment and the three bedroom apartment on the first floor can be connected.

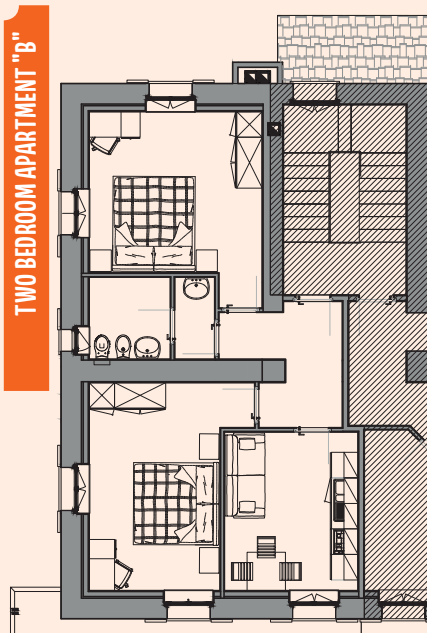
Each apartment comes with fully equipped kitchen area, dishes, cutlery, fridge, electric plates, oven, kettle, hairdryer, Wi-Fi connection, flat screen TV.

Laundry machine and tumble drier are located in a communal room on the ground floor of the Chalet.

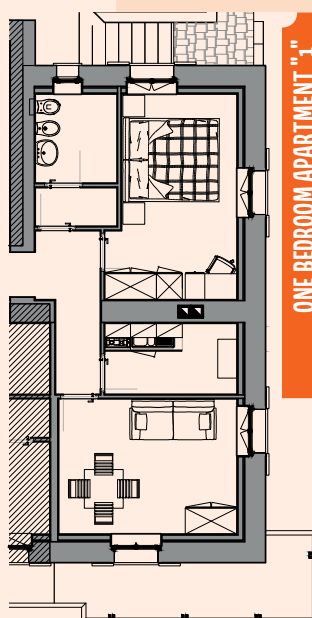
Included in the rent are also towels and toiletries for each guest. All apartments are non-smoking.



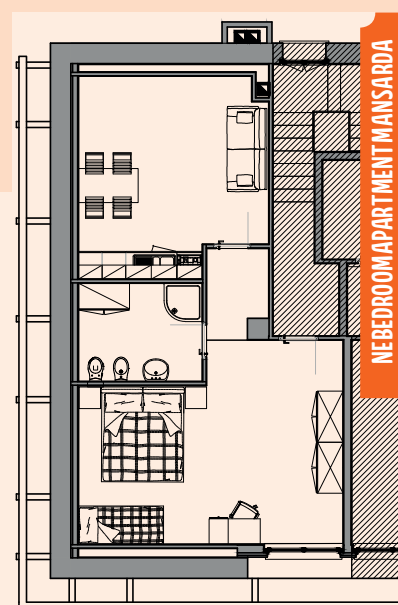
TWO BEDROOM APARTMENT "A"



TWO BEDROOM APARTMENT "B"



ONE BEDROOM APARTMENT "1"



ONE BEDROOM APARTMENT MANSARDA

Chalet Felse APARTMENTS Gallery

<https://pirovano.it/en/accomodation/apartments-bormio/chalet-felse-apartments/>